

# Pyramix and Nucleus<sup>2</sup>

## Setup and Quick Start Guide



## Introduction

This tutorial details how to setup Reason with your SSL Nucleus<sup>2</sup>.

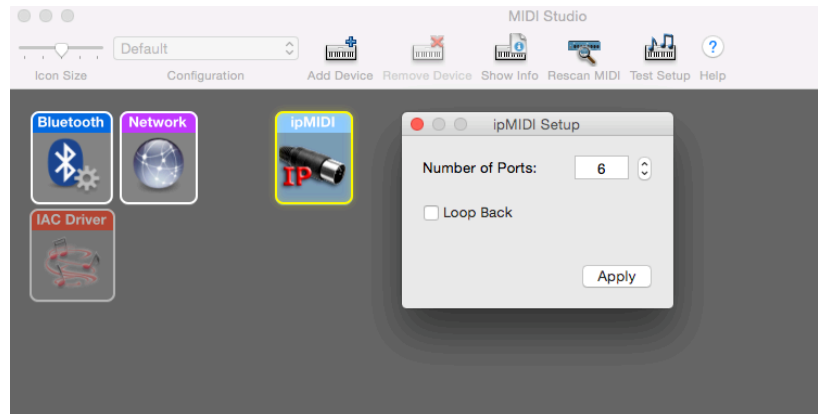
This tutorial assumes you have already installed all the necessary Nucleus<sup>2</sup> related software on your computer and that there is both a working network and USB connection from your DAW computer to the Nucleus. If you have yet to configure this part of your system, please refer to the Nucleus<sup>2</sup> Owner's Manual before continuing.

Go to the SSL website › Nucleus<sup>2</sup> Product page › Downloads to make sure your software is all up-to-date.

# ipMIDI Setup

## Apple MacOSX

- 1) Close all applications using MIDI
- 2) Open AudioMidi Setup (Applications > Utilities > Audio MIDI Setup)
- 3) Open the MIDI Window (Audio MIDI Setup > Window > Show MIDI Studio)
- 4) Double click the ipMIDI icon
- 5) Set number of ports to 6 and ensure that 'Loopback' is not ticked and then press 'Apply'



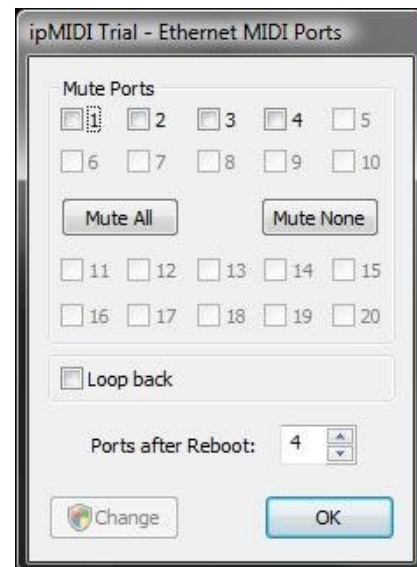
OR

## Microsoft Windows OS

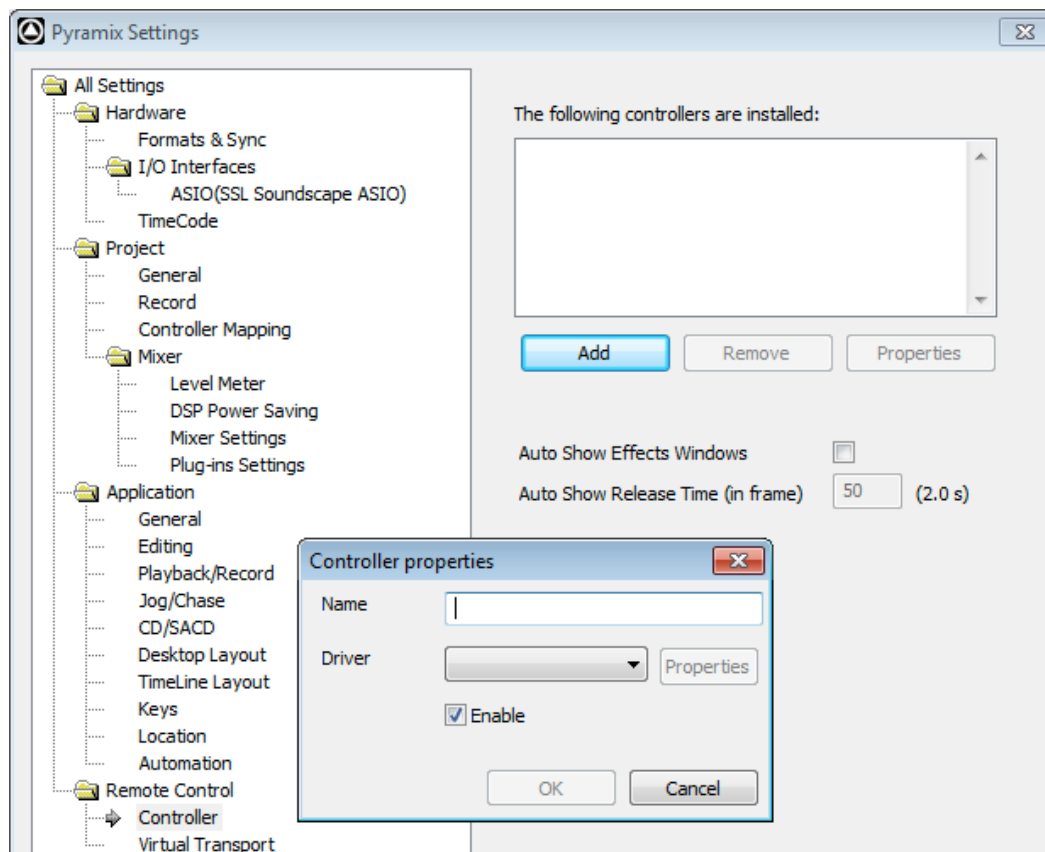
This setup information covers Windows 7, 8, and 10

- 1) Launch the ipMIDI Monitor application
- 2) Ensure Ports 1 to 6 are not muted
- 3) Un-tick 'Loop Back'
- 4) Set 'Ports after Reboot' to 6 and ensure that 'Loopback' is not ticked and then press 'OK'

**Note:** If you are opening up Ports for the first time, after Rebooting your computer, these will be 'muted'. Be sure to open ipMIDI back up and untick the muted Ports

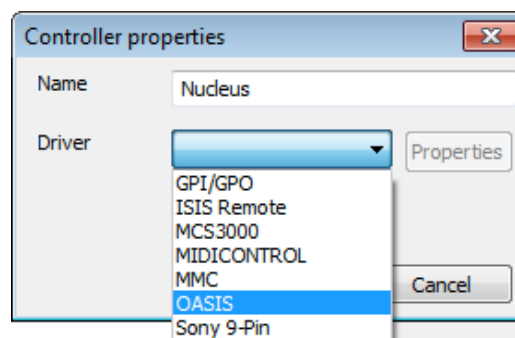


# Setting up Pyramix

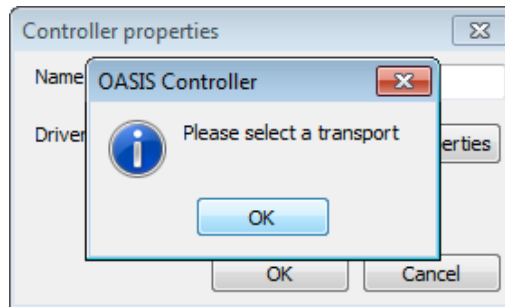


This tutorial shows control of Pyramix on DAW layer 1.

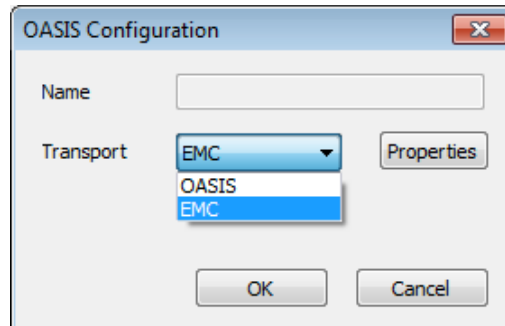
- 1) Launch Pyramix and click 'All Settings' under the View or Settings menu.
- 2) In the Pyramix Settings window, click 'Controller' from the left hand pane, and then 'Add'.
- 3) In the Controller properties window, give your controller a name (Nucleus<sup>2</sup> for example) and then select 'OASIS' from the Driver dropdown menu.



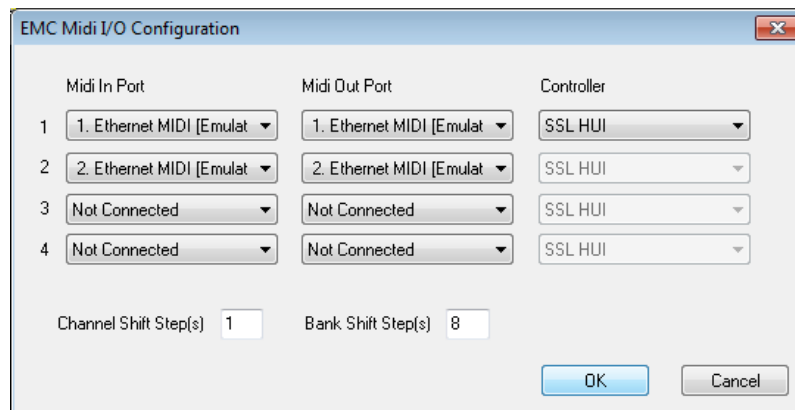
- 4) Click the 'Properties' button – this will prompt you to setup a transport, click ok to take you to the setup window for this.



- 5) Select 'EMC' in the Transport dropdown menu (as shown below), then click the properties button.



- 6) In the EMC Midi I/O Configuration Window, select ipMIDI Port 1 for MIDI Input and MIDI Output on the top row, and then SSL HUI from the controller drop-down menu. Do the same for the second row with ipMIDI port 2 (shown below).



- 7) Click OK to close dialogues

### Nucleus<sup>2</sup> Setup

Open the Remote Application, and ensure that DAW layer 1 is set to the 'Pro Tools Standard' profile for control of Pyramix.