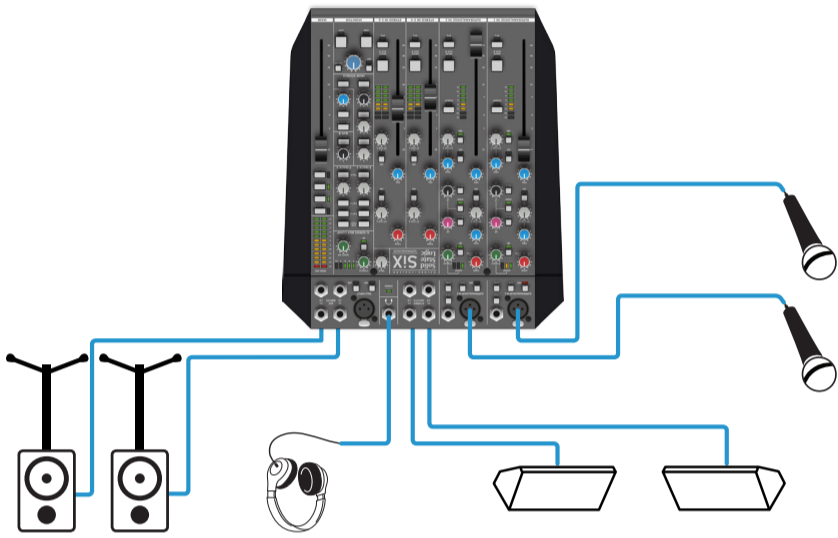
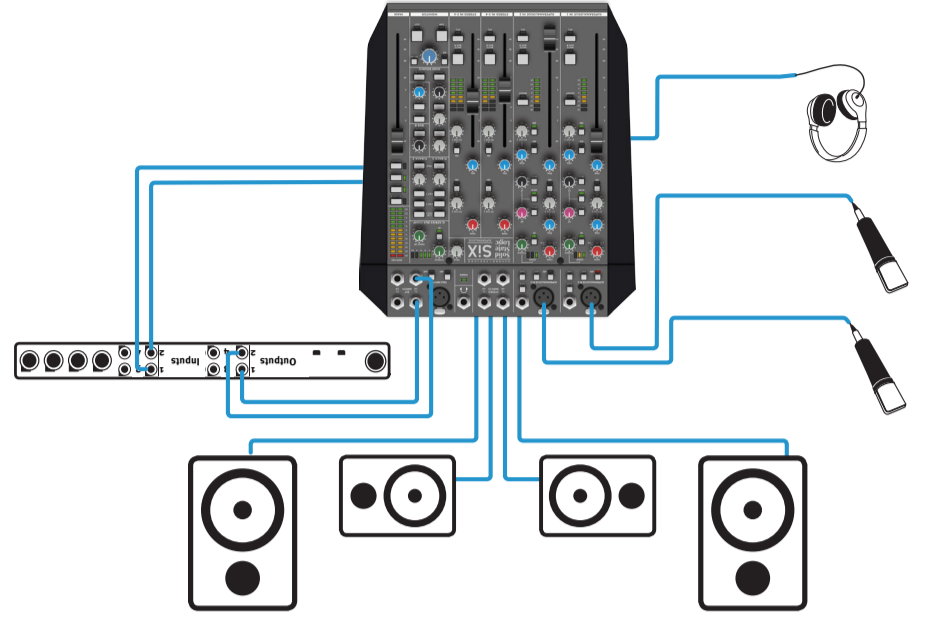


Live: Performance



Live: FOH & Monitors



Studio: Recording & Mixing

SiX is the useful side-kick for the studio or the stage, carrying the DNA of generations of Solid State Logic analogue mixing systems. Our philosophy is simple; we spare nothing in designing and manufacturing the best precision music tools available anywhere. There is no single magic stage in SiX. Everything from the SuperAnalogue™ pre-amps, through the line level electronics, signal processing and output stages plays its part in delivering the very best audio quality and workflow.

This Quickstart Guide provides a brief overview of SiX's feature set and connectivity. For more detailed descriptions, tutorials and specifications, please download the SiX User Guide from the SSL website: www.solidstatellogic.com/studio/six

Thank you for purchasing SiX

www.solidstatellogic.com

SiX Quickstart Guide

Troubleshooting and FAQ

Frequently Asked Questions can be found on the Solid State Logic website at: <http://www.solidstatellogic.com>

Ask a Question

If you require technical support for SiX or other SSL Studio Products, click on the Ask a Question link on the support page to open a support ticket and an SSL Product Support engineer will be in contact.

82BWFH01C

SiX

SUPERANALOGUE MIC PRE-AMP
Console-grade mic pre-amps with +48V phantom power and high-pass filter.

SUPERANALOGUE LINE INPUT
Console-grade line level inputs switchable to high impedance (Hi-Z) for instrument sources.

STEREO CHANNELS
Two line-level stereo channels with cue sends, input trim, and 100mm channel fader. Left input only becomes mono to left and right

TALKBACK INPUT
Talkback mic input with fixed 45dB input gain, switchable +48V and LMC (listen mic compressor) circuit, and adjustable output level control.

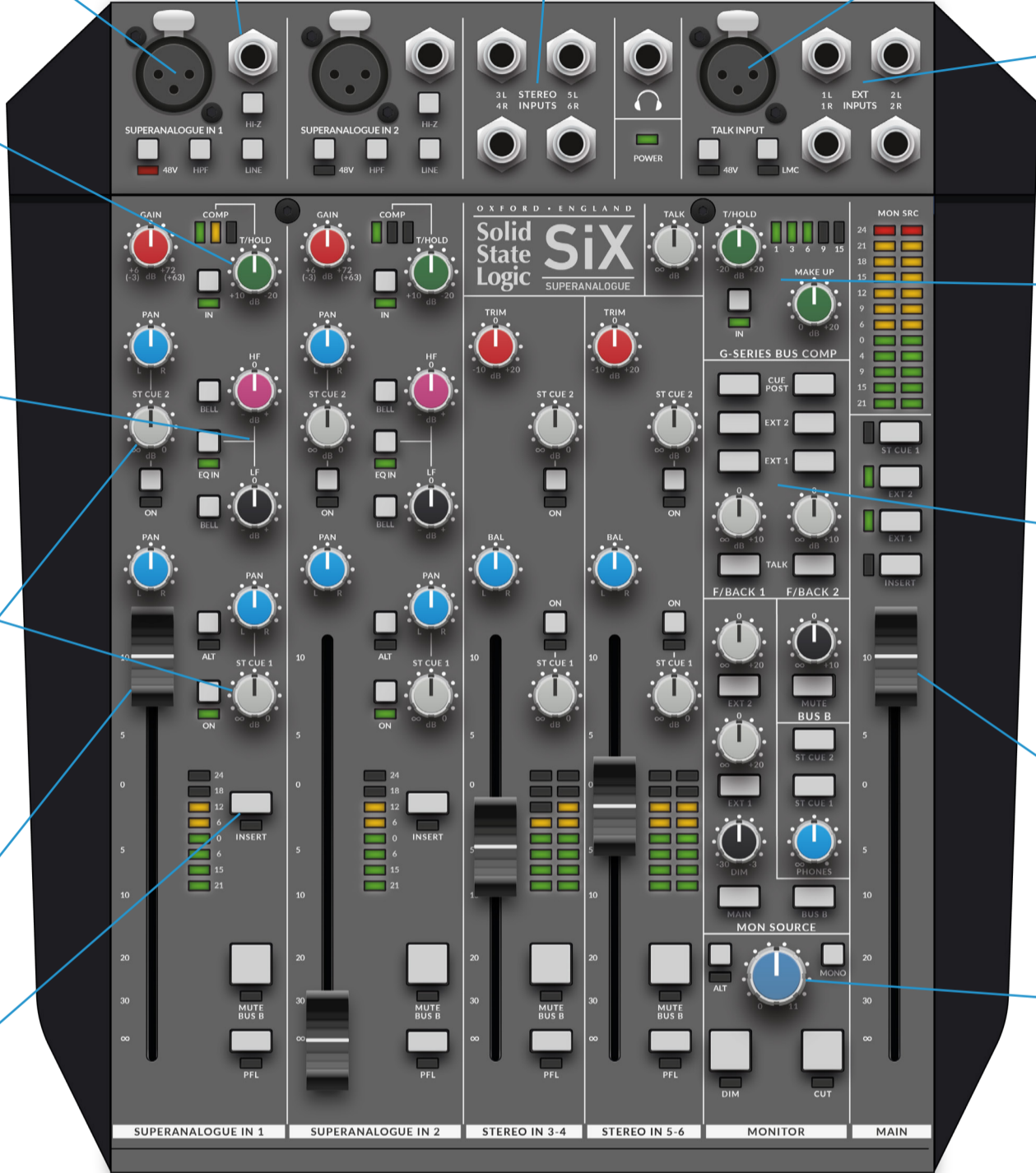
CHANNEL COMPRESSOR
Inspired by the channel dynamics section found on SSL's analogue consoles, with signal dependant attack, release, and ratio parameters, auto make-up gain, and adjustable threshold.

CHANNEL EQ
Two-band EQ with the HF and LF bands found on SSL's analogue consoles. Each band is switchable between shelf and bell EQ curves.

STEREO CUE SENDS
Two stereo cue sends with independent level and pan controls. Useful for creating monitor mixes, FX sends, and parallel processing in the studio.

CHANNEL FADER
100mm channel fader for adjusting channel level; the same fader found on SSL's large format analogue consoles.

CHANNEL INSERT POINT
Balanced insert point with independent send and return connectors for external processing.



EXTERNAL INPUTS
Two stereo external inputs that can be summed to the main mix bus, and routed to the foldback outputs.

G-SERIES BUS COMP
The legendary SSL bus compressor, inspired by the original designs found on the SL4000G console released in 1989.

FOLDBACK MASTERS
Master section for both foldback outputs, sourcing from either the cue sends or external inputs, as well as talkback.

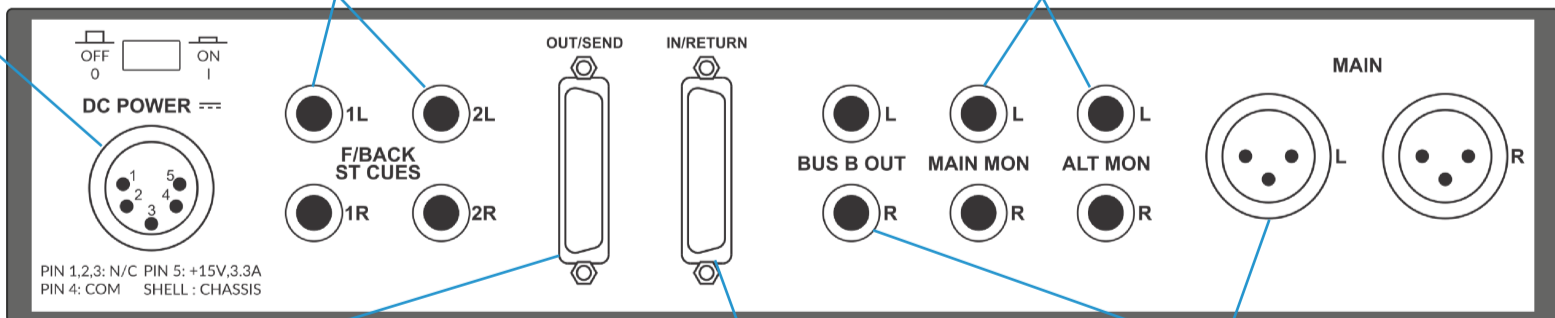
MASTER FADER
100mm channel fader for adjusting mix bus level, with external input and cue summing, and balanced stereo insert point.

MONITOR CONTROL
Monitor control for two speaker sets and a dedicated headphone output, including features found on SSL's analogue consoles such as adjustable DIM, MONO, CUT, and summing source selection.

POWER
Five pin locking power input connector.

FOLDBACK OUTPUTS
Balanced TRS outputs for foldback outputs 1 and 2. These can be used for headphone and monitor mixes, or as cue send outputs to external outboard processors.

MONITOR OUTPUTS
Balanced TRS outputs for main and alternate monitor sets, with rail-ramp technology to minimise thumps on power up/ power down.



OUT/SEND DB25
Eight balanced outputs for mix bus and channel insert points, as well as duplicate main mix and monitor outputs.

IN/RETURN DB25
Six balanced inputs for mix bus and channel insert points, as well as channel alternate inputs.

MIX BUS OUTPUTS
Balanced outputs for main mix bus and mix bus B.

1	Main mix insert send L	5	Main mix output L
2	Main mix insert send R	6	Main mix output R
3	Channel 1 insert send	7	Mon output L
4	Channel 2 insert send	8	Mon output R

1	Main mix insert return L	5	Channel 1 alt input
2	Main mix insert return R	6	Channel 2 alt input
3	Channel 1 insert return	7	Not used
4	Channel 2 insert return	8	Not used